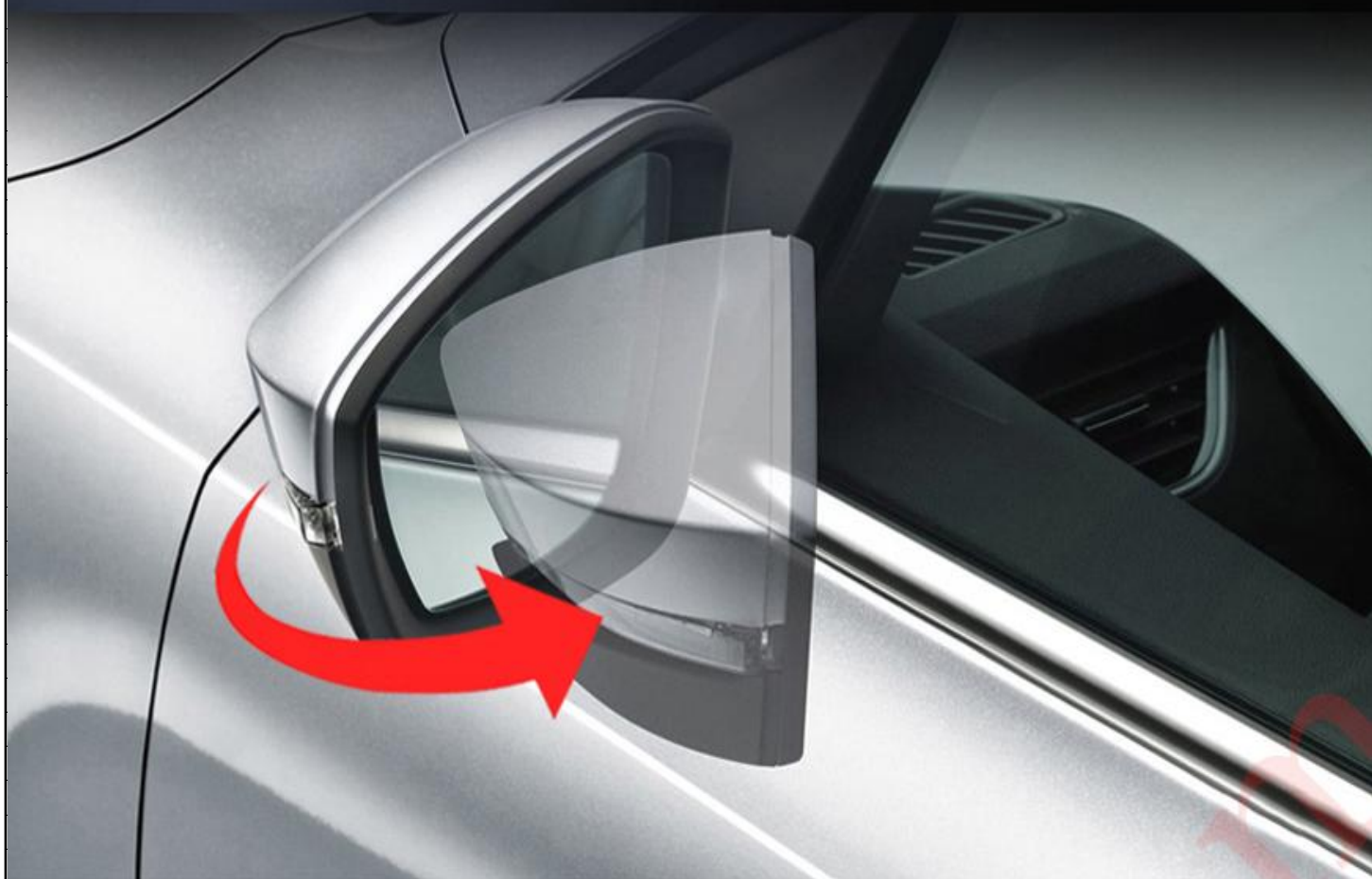


# Side rearview mirror folding kit installation instructions



COPIED

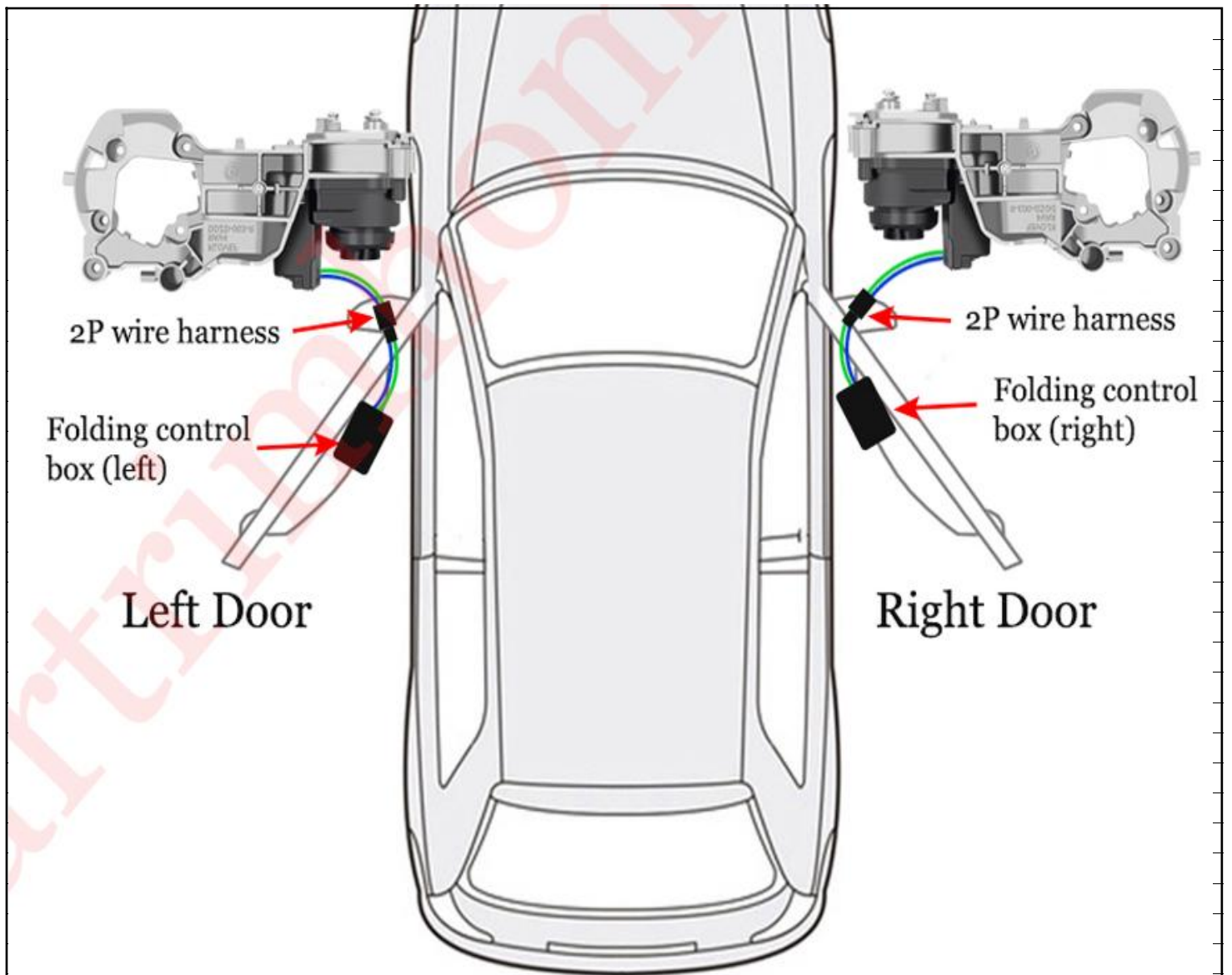


**LOCK: MIRROR FOLD**

**UNLOCK: MIRROR UNFOLD**

**SWITCH CONTROLS MIRROR**



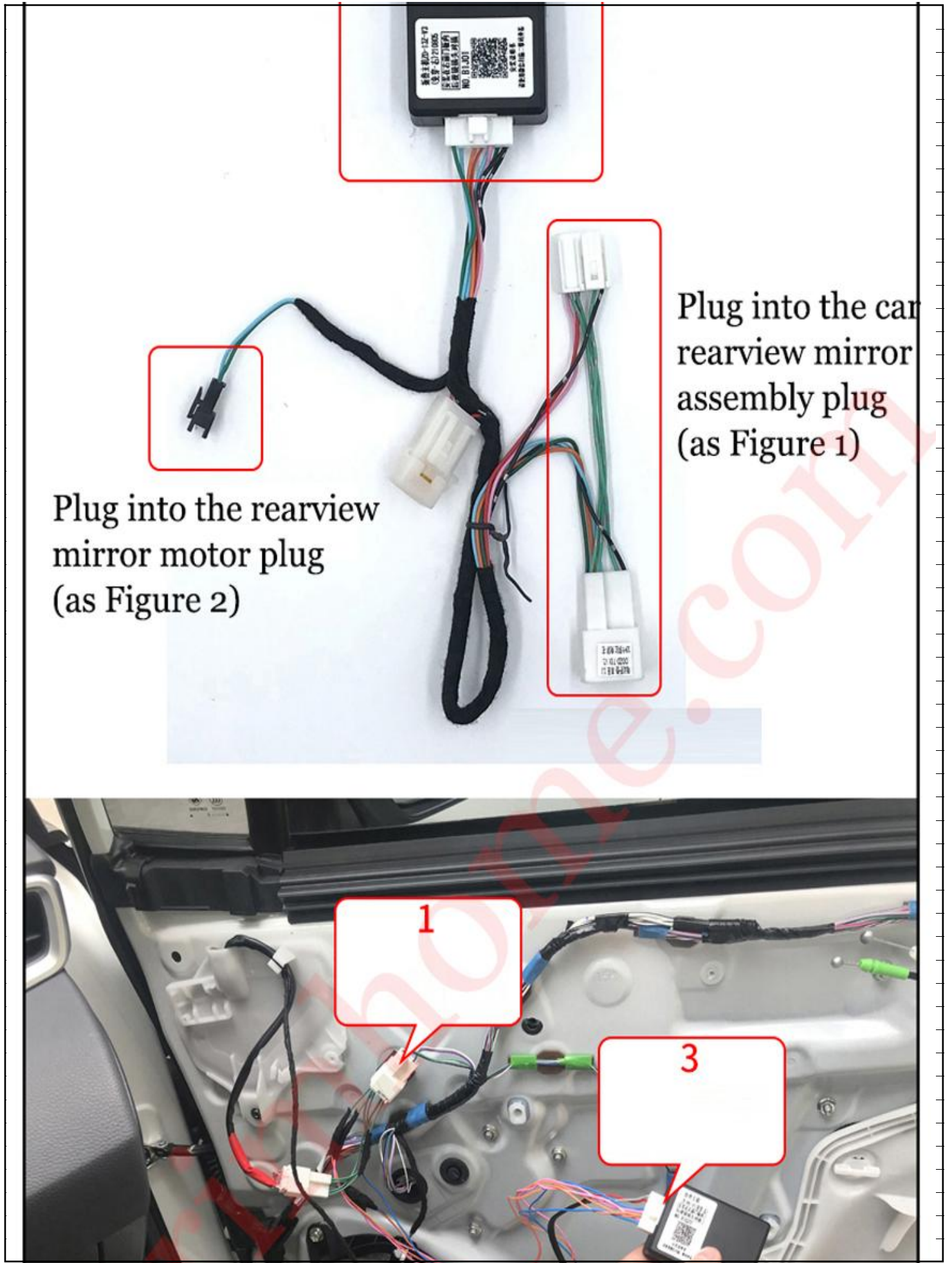


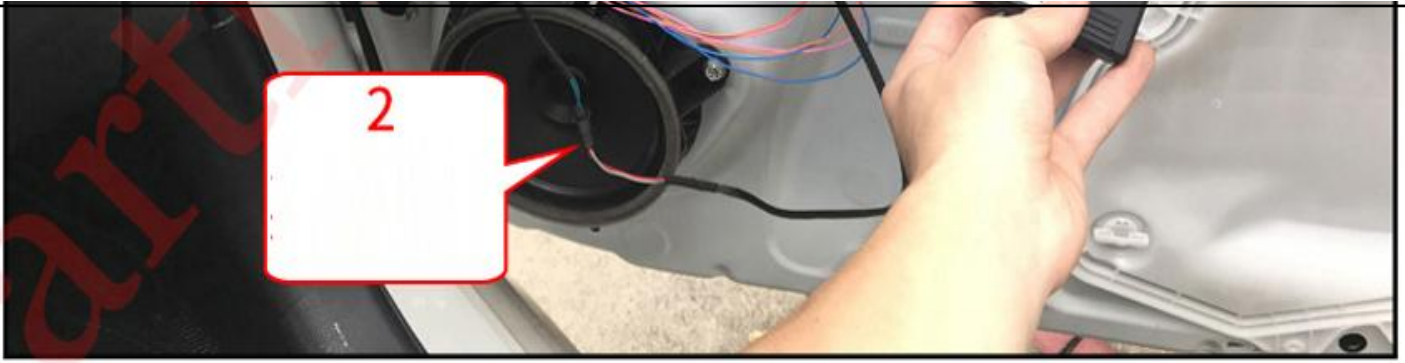
Note: The reason why the rearview mirrors of some models are not folded synchronously: In order to extend the life of the motor and ensure the safety of the circuit, the motor starts in a staggered manner, making the working current smaller and safer to use.

**Note: Install the right side first and then the left side.**



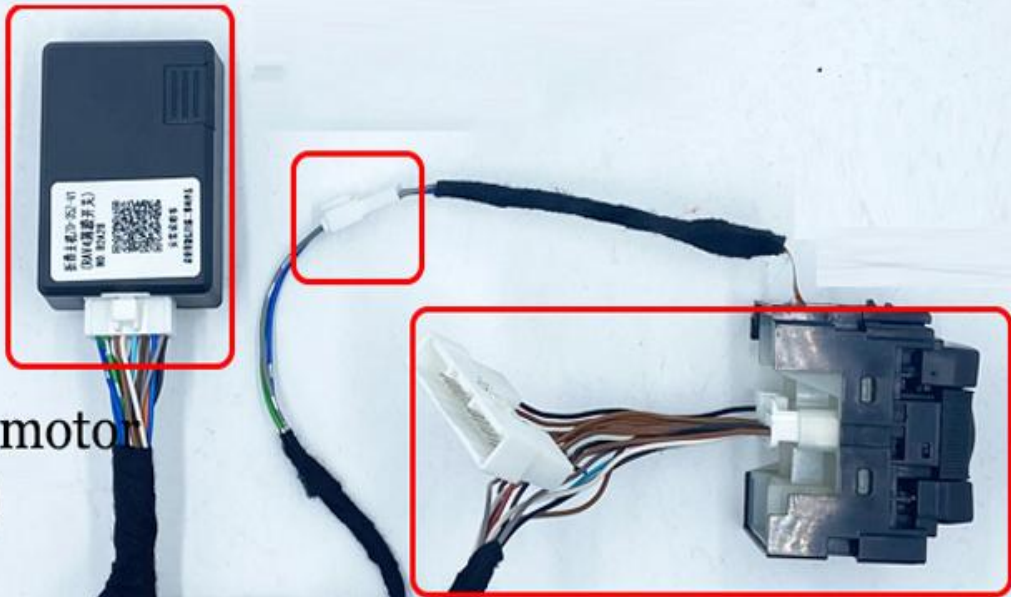






## Left Side

Fold controller (left)



Connect the motor  
(as Figure 2)

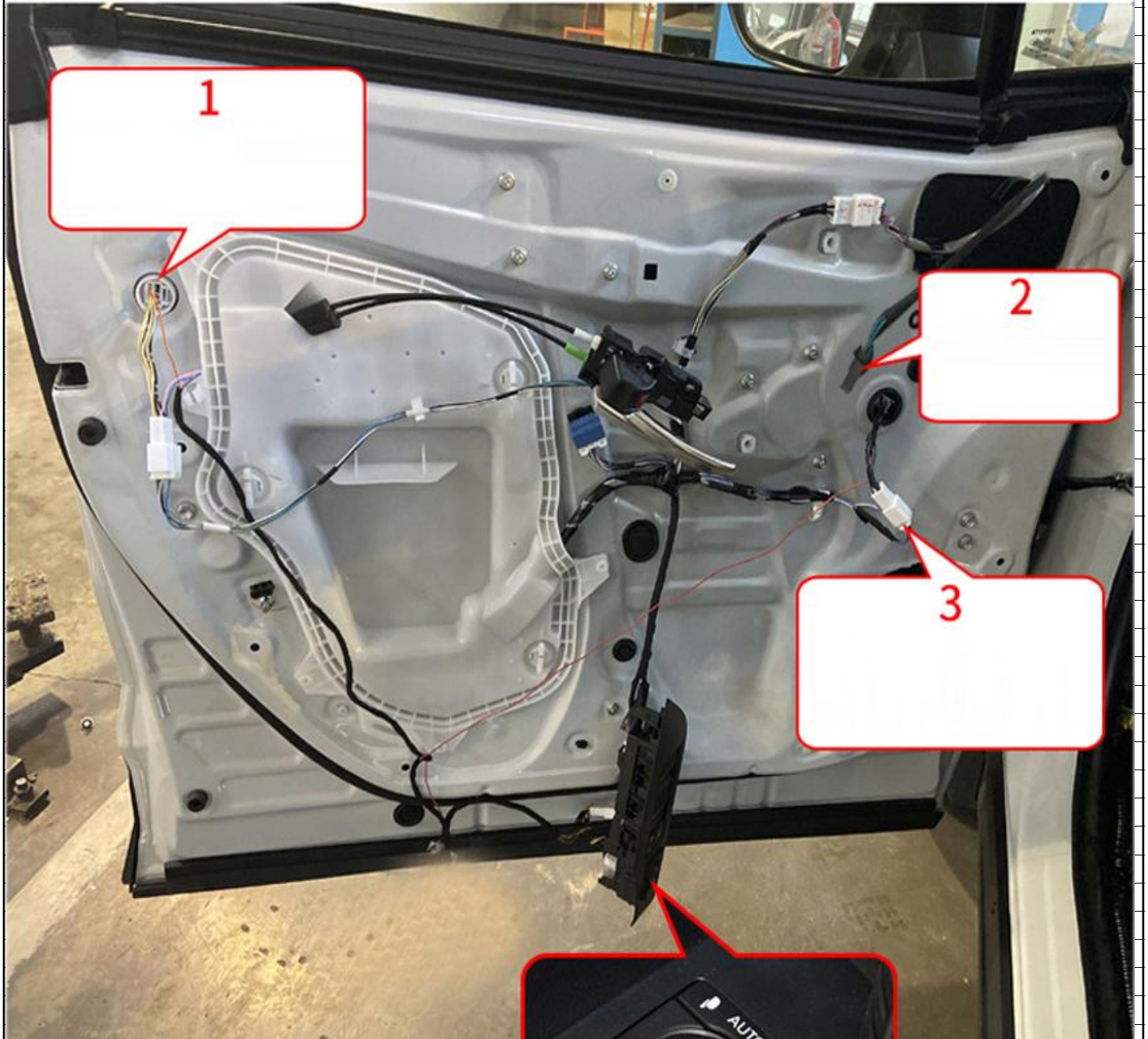






Plug into the car door panel power plug  
(as Figure 3)

Connect with the car control switch (as Figure 1)

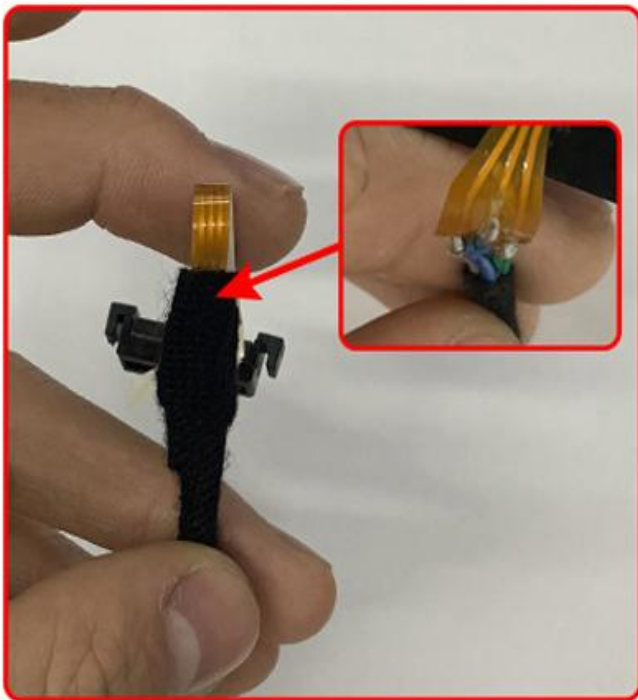


## Note:

It is very important to install the switch

The solder joints are easily damaged, so please be careful during installation and do not fold the wire harness.

Wrong (harness is folded)



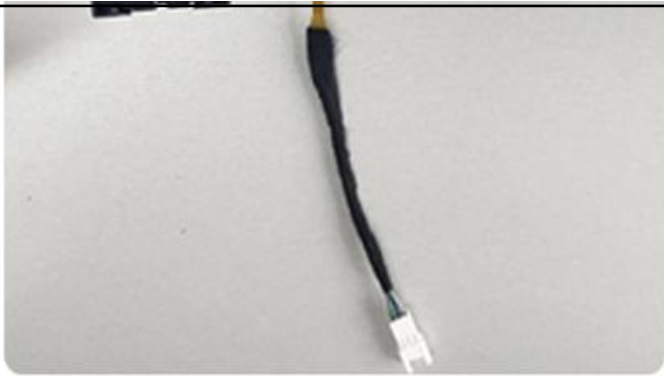
Correct



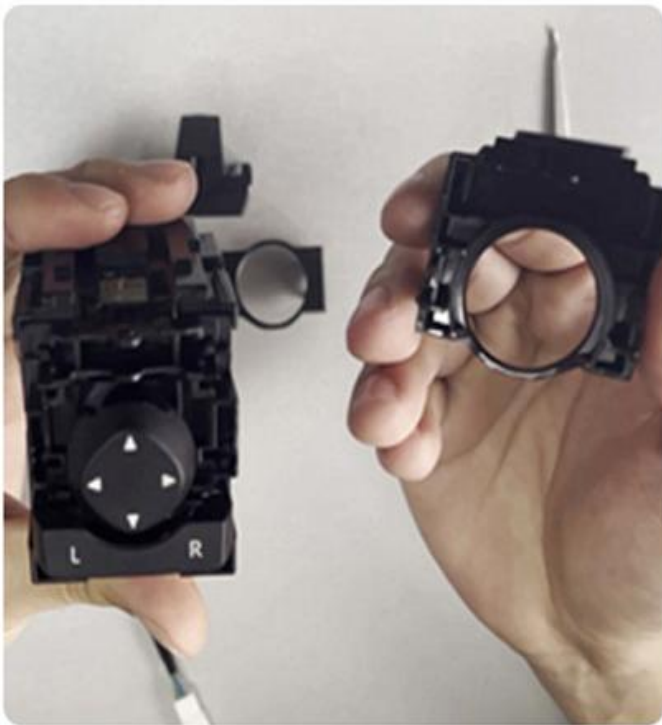
Do not fold the wiring harness during installation, as this may cause poor contact.



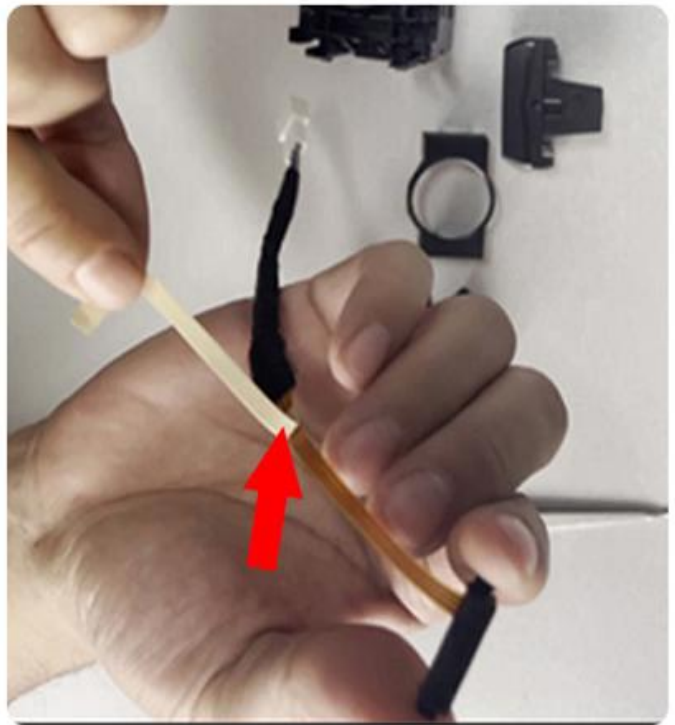




Use a tool to open the switch cover



Remove the cover



Peel off the 3M adhesive protective film of this wire harness





Connect one end of this wire harness to this location on the switch.

Glue the wiring harness into the switch gap



Install our switch and put the OEM cover on.







Finish

Installation step 1. Remove the door panels on the left and right sides (the removal method is the same on the left and right sides)



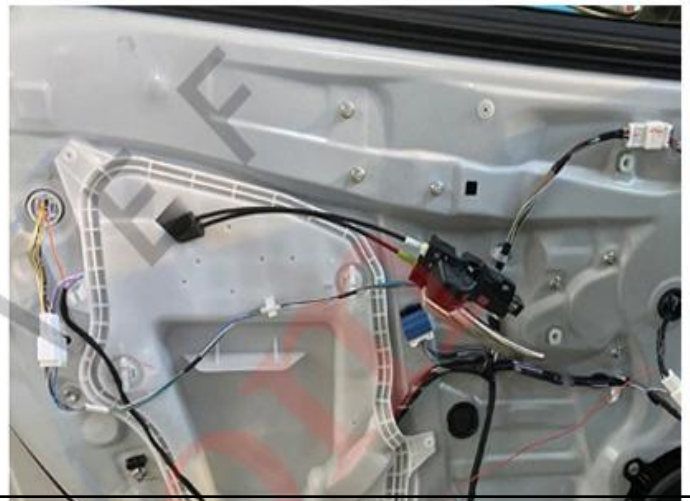




Use a tool to pry the window switch panel and take out the window switch. Remember to unplug the wiring harness.



Use a Phillips screwdriver to unscrew the screw inside the door handle and take out the armrest panel.



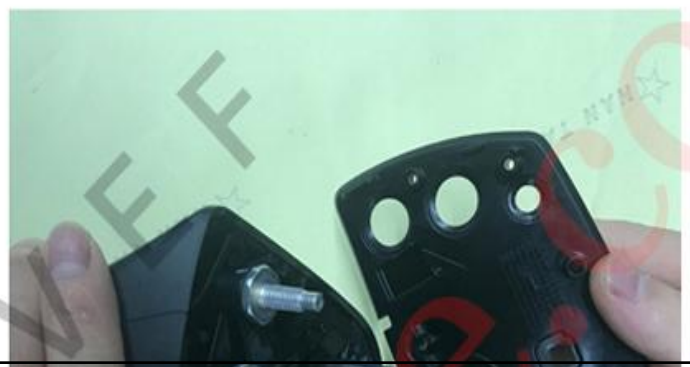
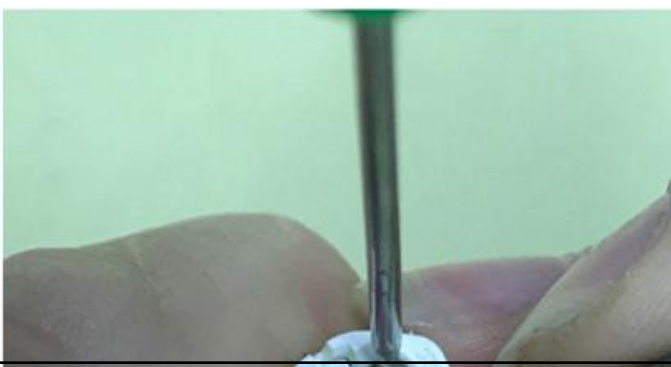


Use a Phillips screwdriver to unscrew the two screws inside the armrest trim and take out the door panel



Remove these three screws, unplug the rearview mirror control harness, and remove the rearview mirror.

## Install rearview mirror motor







Use the depinning tool to hold the needle of the wiring harness and remove the white connector and remove the base rubber pad.  
(Please take photos of each position of the wiring harness's pins before removing them)



Use a flat-blade screwdriver to pry out the buckle in the lens (there are two buckles) and take out the lens







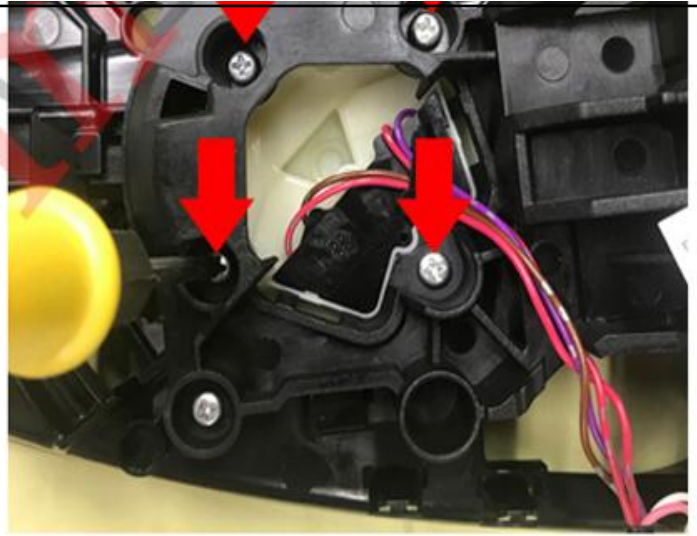
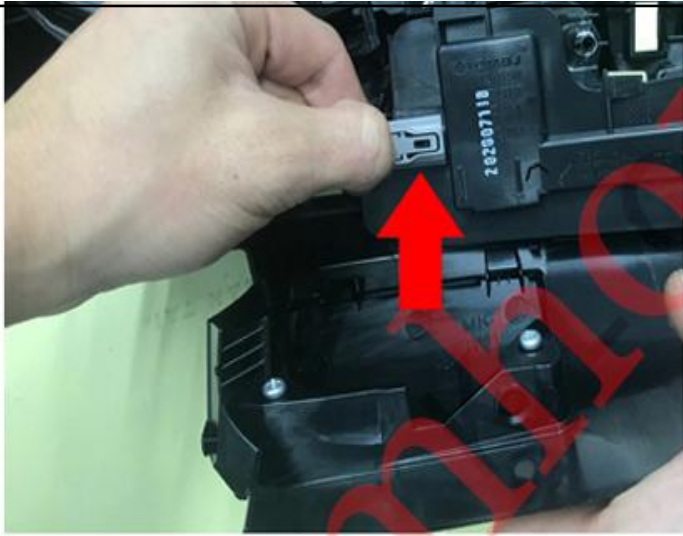
Use a pry tool to pry the rearview mirror cover from this location and remove.



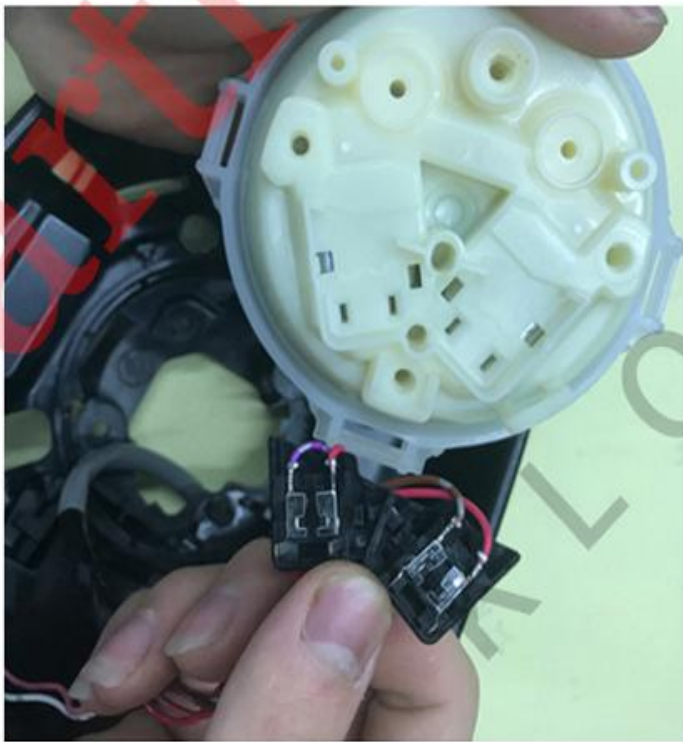
Use a Phillips screwdriver to unscrew the two screws on the lower cover of the rearview mirror. Then use a crowbar to lift out the back cover from here.



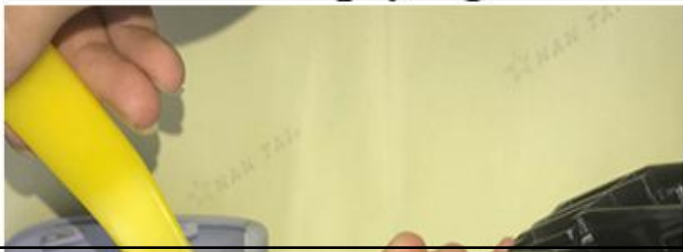




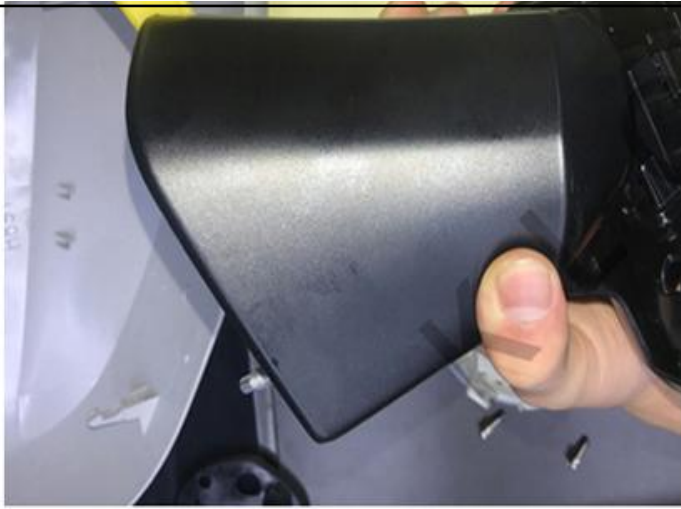
Use a cross-head screwdriver to unscrew the four screws of the mirror adjustment motor and then pull out the rearview mirror turn signal plug.



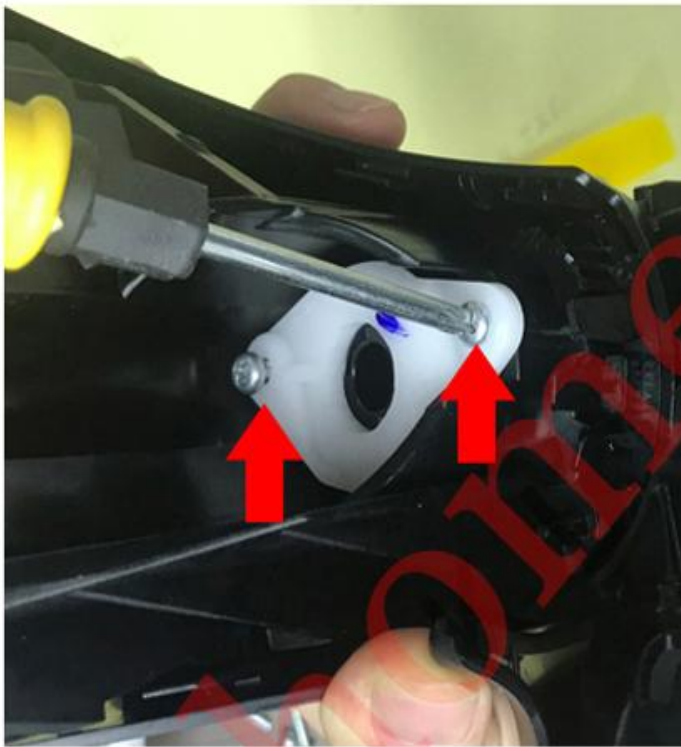
Use a depinning tool to pry out the mirror adjustment motor plug. Use tools to pry out these three buckles. Note: Be very careful when prying this buckle



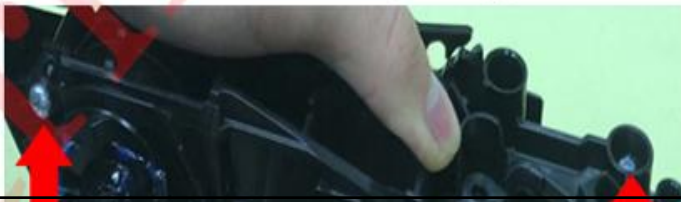




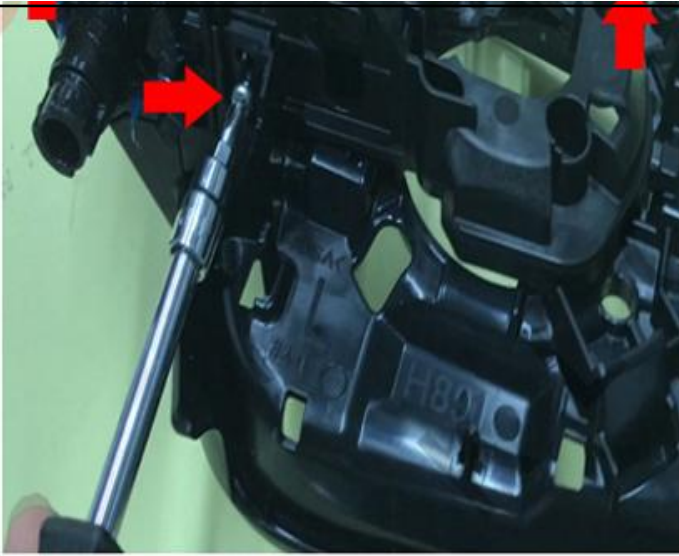
Use a pry tool to lift off the base cover and take out the base cover



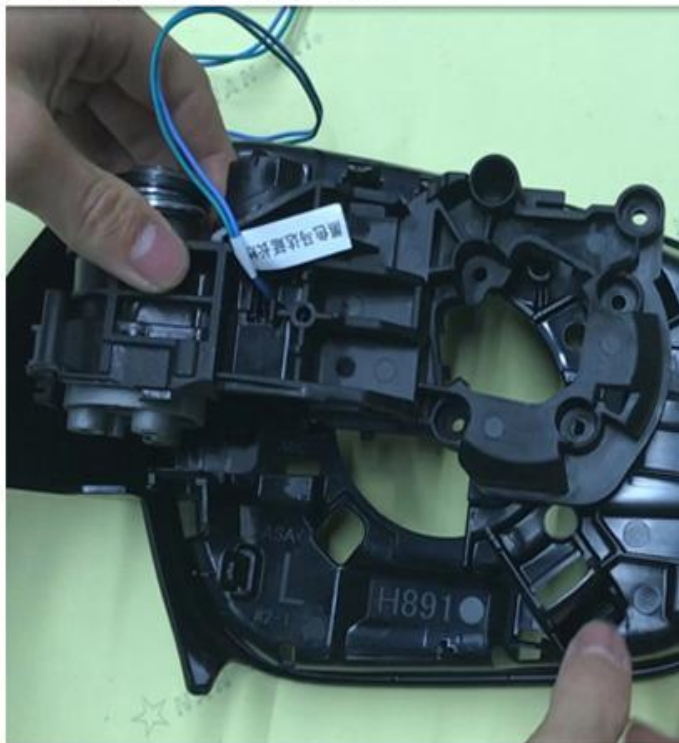
Use a Phillips screwdriver to unscrew the two screws from the white plastic panel. Use needle-nose pliers to align the two holes and press down firmly. After pressing down, rotate it about 25 degrees.





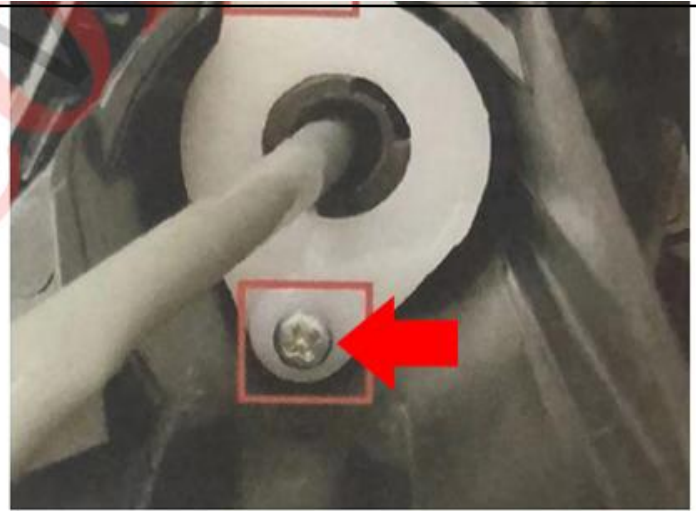
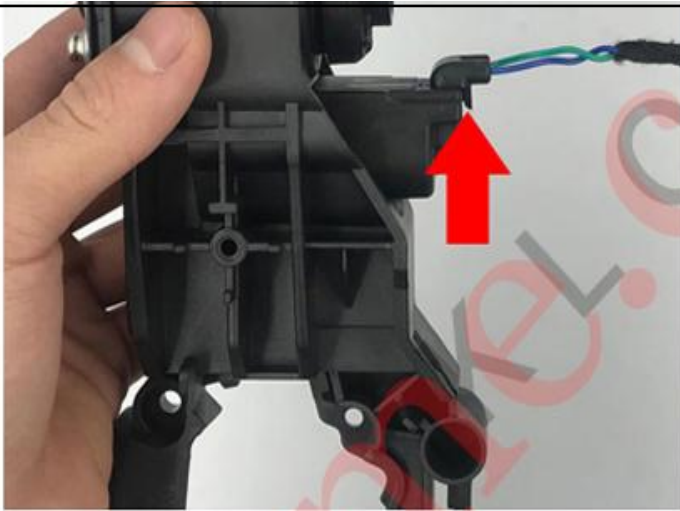


Use a Phillips screwdriver to unscrew the three screws in the rearview mirror bracket and take out the rearview mirror bracket



Install the product motor and insert the wiring harness into the motor interface





Rendering after connection.

Unscrew the two short screws from the rear view mirror.

Note: These two are short screws

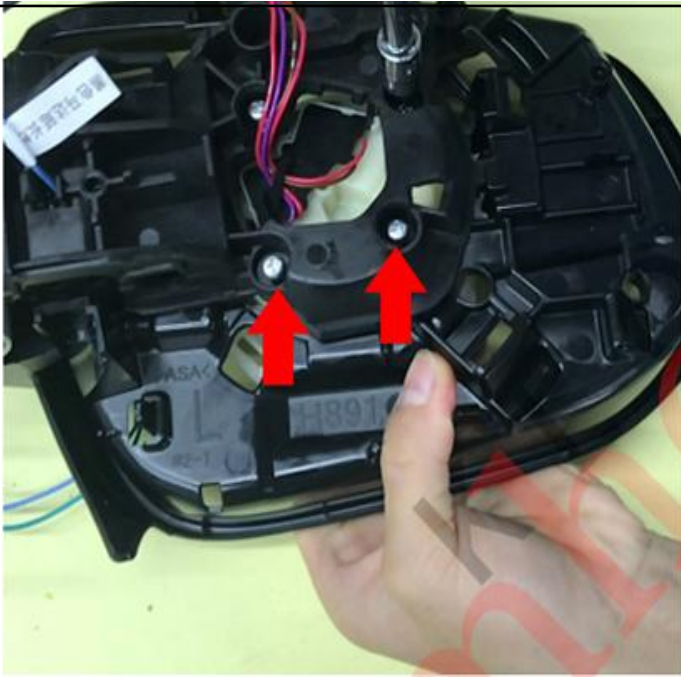


Fasten the two short screws you just unscrewed into the rearview mirror motor. Note: Short screws must be used in the two places pointed by the arrows.

Plug the mirror adjustment plug back into the motor



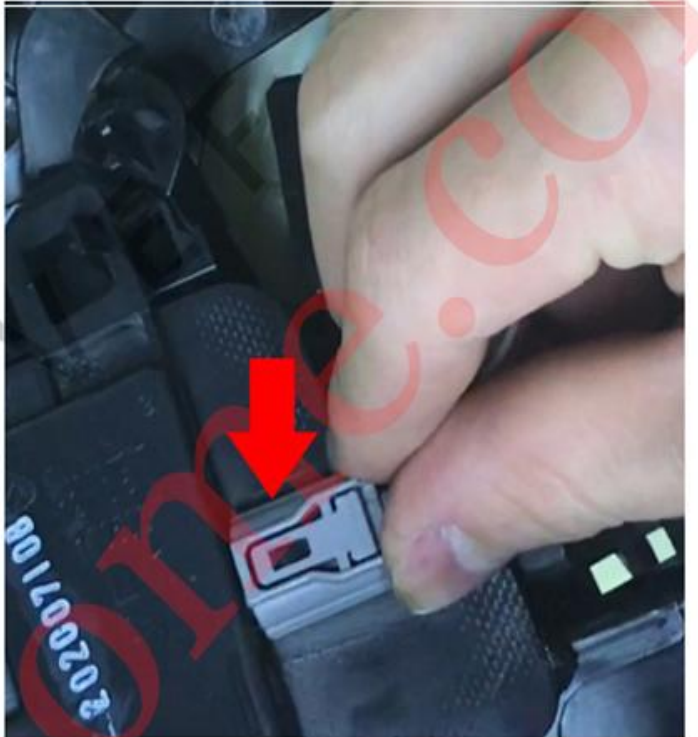




Tighten the screw back into the mirror adjustment motor position. Take out the product wiring harness and original vehicle wiring harness from the base.



Screw the product screw into the motor base.



Plug the rearview mirror turn signal plug back in.





Install the rearview mirror bottom cover.



Tighten these two screws back on the mirror cover.



Install the rearview mirror cover, the rubber pad of the base, and the mirror in



base, and the mirror in  
sequence.



**Note:** If the folding/unfolding arc (position) is incorrect, proceed as follows. Start the vehicle first, and manually control the folding-unfolding-folding-unfolding-folding-unfolding-folding-unfolding.