



# CARTRIMHOME FOLDING MIRROR INSTALL GUIDE

Rev1

## Abstract

This is an installation guide for Cartimhome Folding Mirror

Daytonaviolet  
Fern930\_m3@yahoo.com



Parts Check





## Part 1: Door panel and mirror removal

Remove mirror housing cover by pulling straight out. It's held on by these two clips.



Remove three covers and 3 screws.





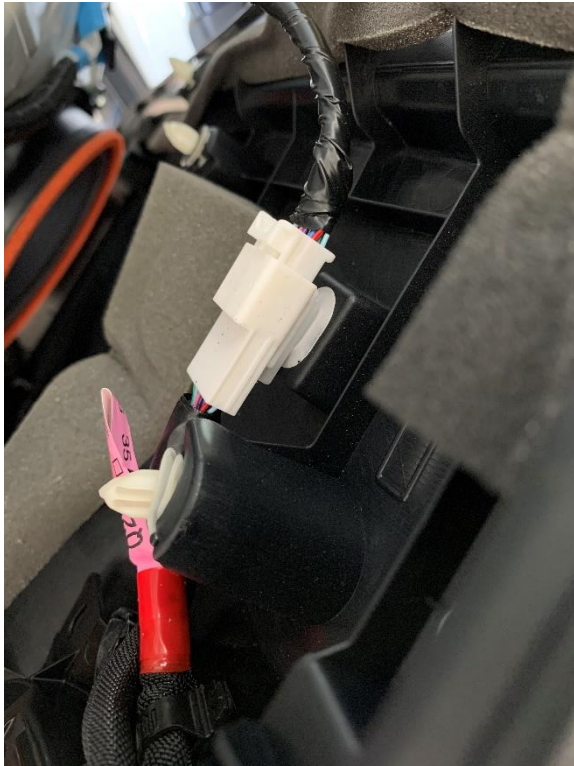
Once all 3 screws are out, pull on the edge of the door panel to remove.



Pull up on each of the green and white plastic parts of the wire to release from door.



Squeeze tab to release this clip



Unplug the vanity door light.





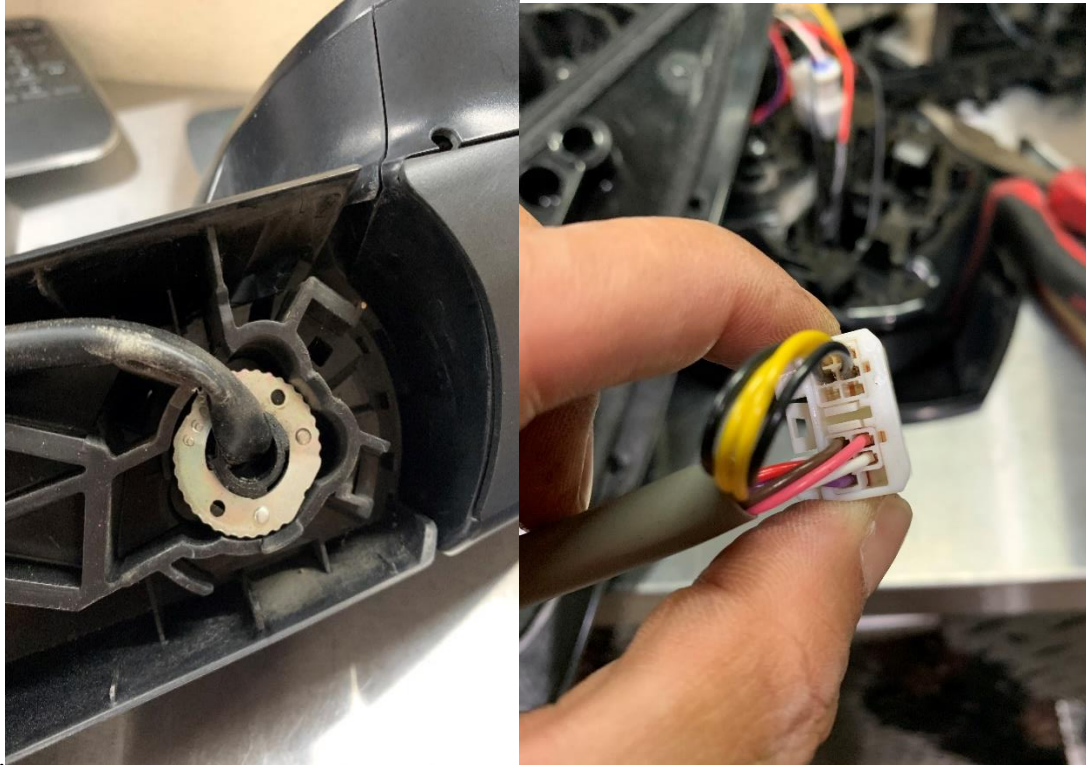


Remove these three nuts with a 10mm socket. Also remove clip on the rubber weather stripping.

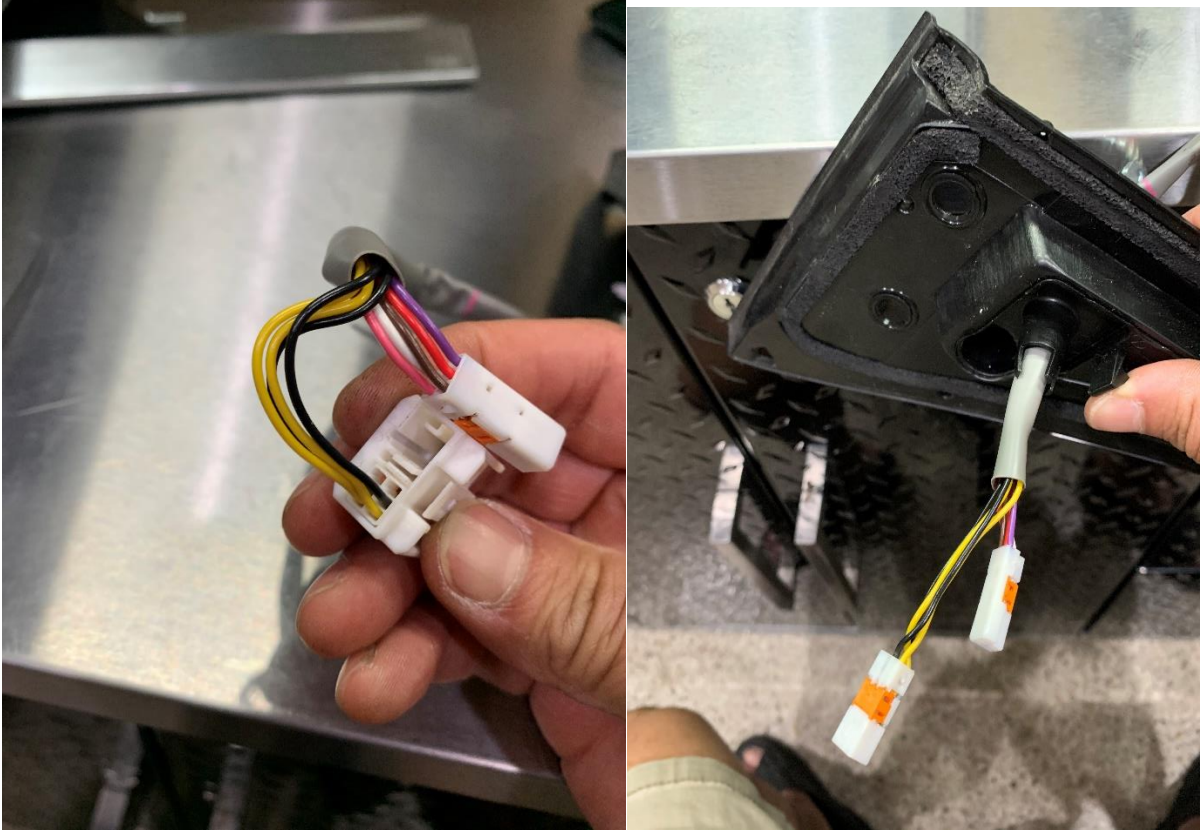
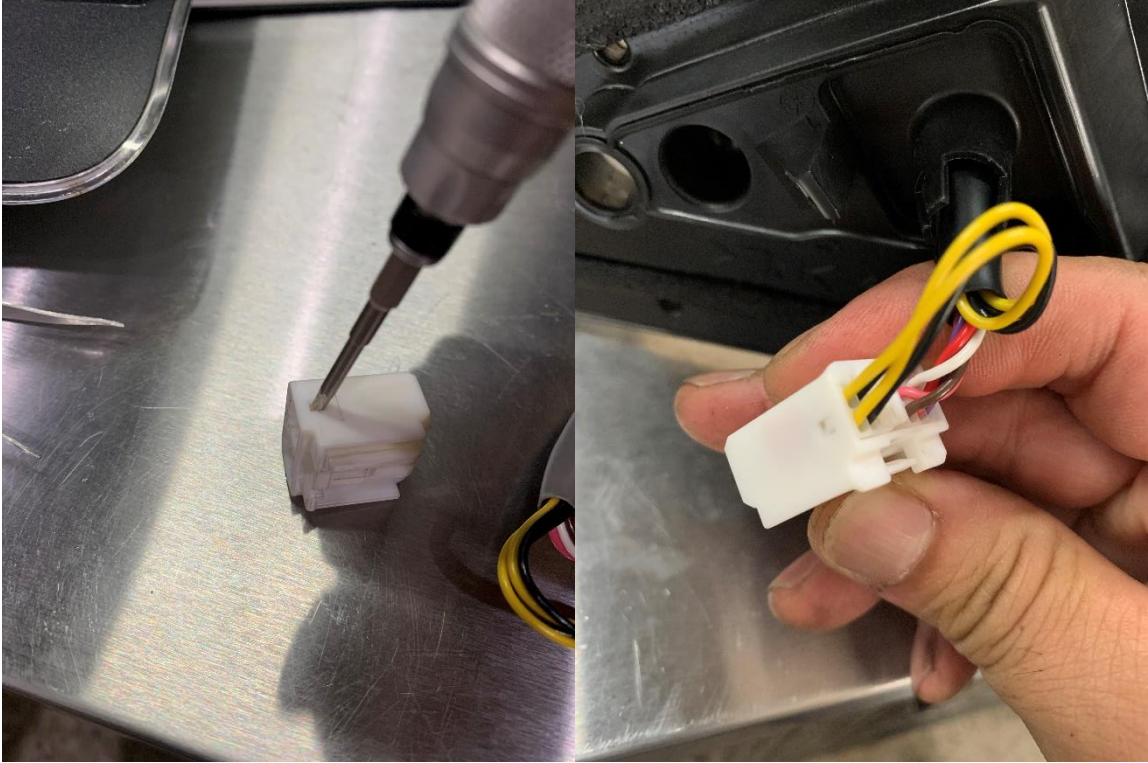


## Part 2 : Power mirror assembly

Here we will take apart the mirror internals. The square plug needs to be taken apart so it can fit through the center shaft of the mirror arm



Pressing on this area and pressing the internal tabs to the sides will release the two clips.

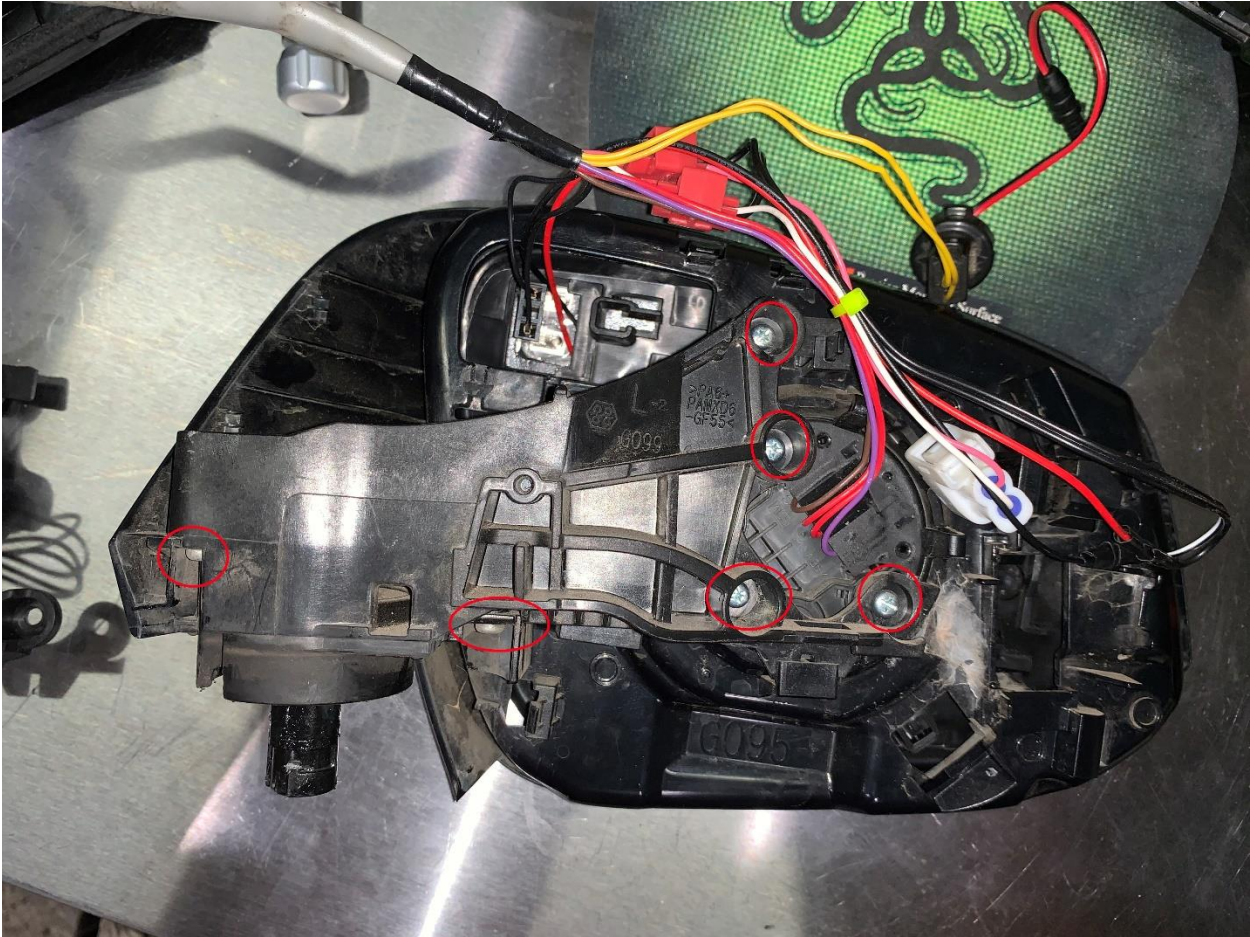


With the mirror in the unfolded position, remove the metal clip with a pair of needle nose pliers. Turn it so the center groves clear the shaft sleeves. Metal clip, spring and washer will no longer be used.

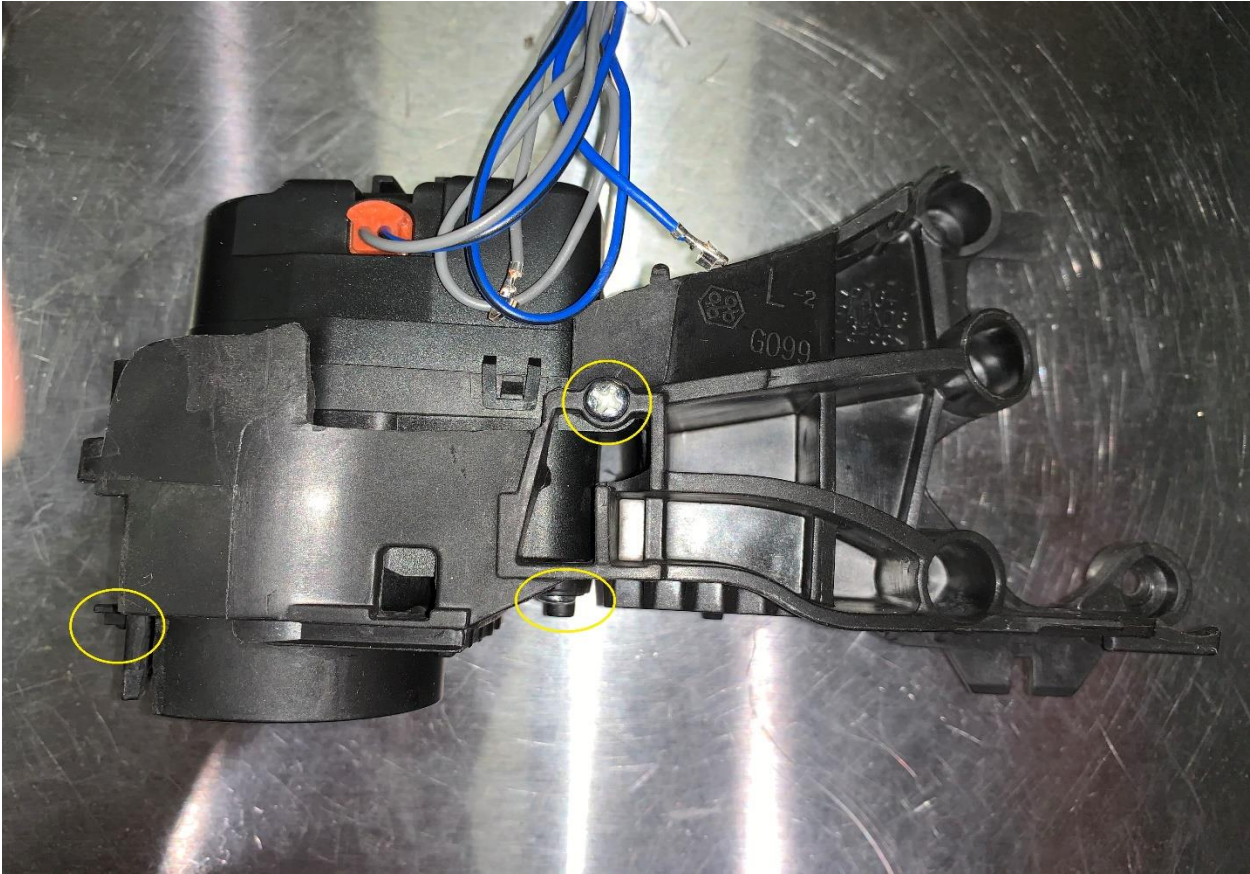




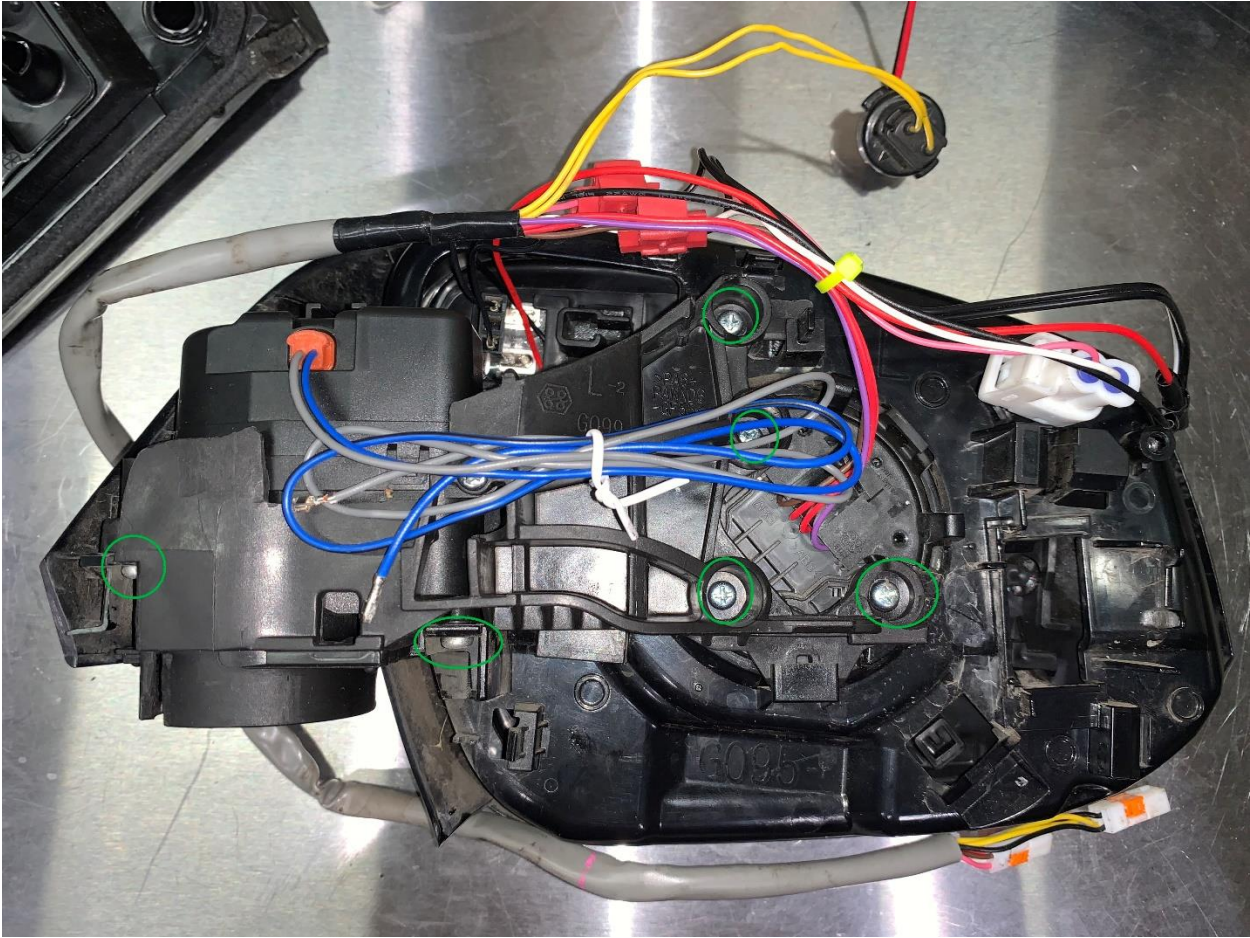
Remove the circled screws. This will release the mirror arm.



Before installing the motorized mirror arm, remove these 3 screws. These screws will not be used.



Install the motorized arm to the mirror housing. Reuse the original mirror screws.

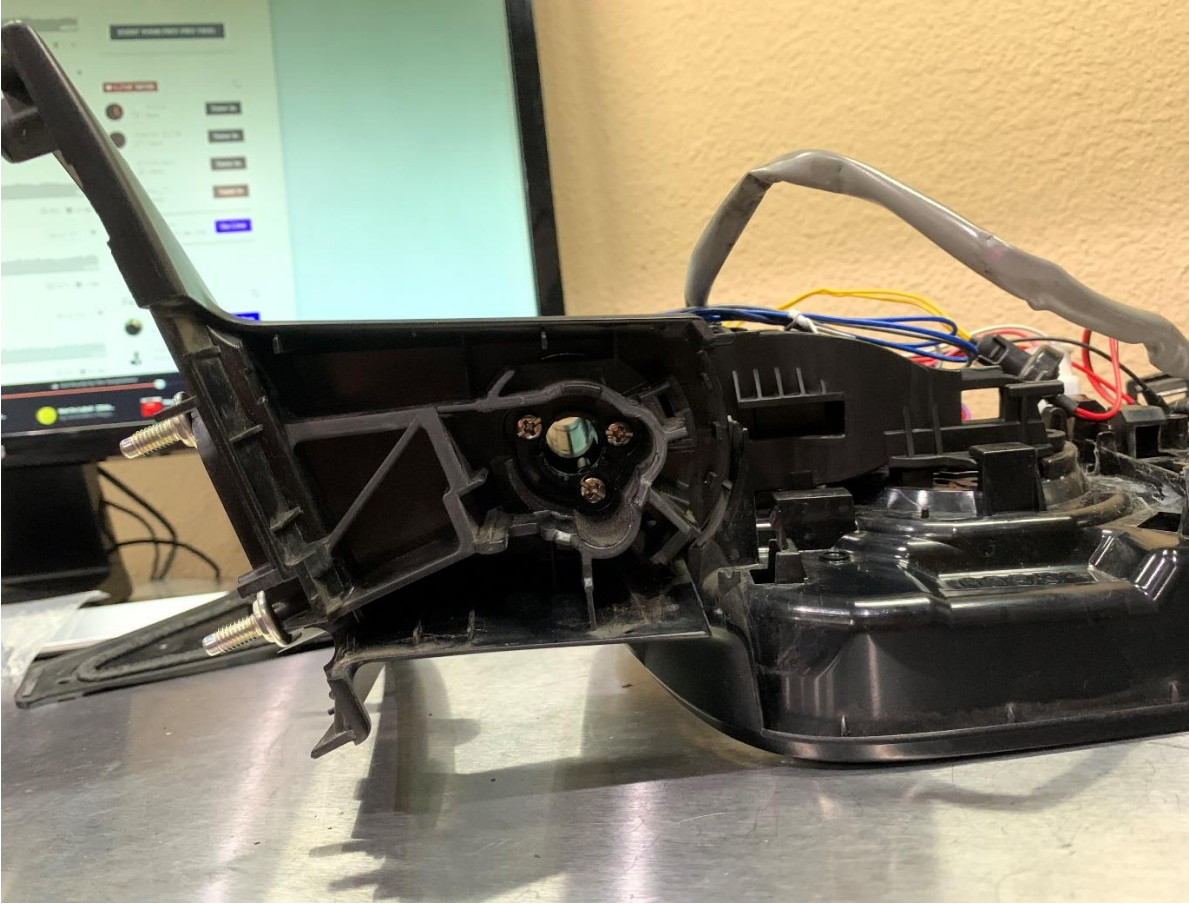




Find the supplied screws and washers and attach the motorized mirror arm to the mirror door base.



Line up up the 3 holes on the motorized arm with the mirror door base 3 holes. Screw in the 3 screws with the washers.



Feed the grey tubing and the two motor wires back into the motorized arm hole and also through the mirror base.

The finished mirror should look like this. Repeat Part 1 and Part 2 for the passenger side mirror.



### Part 3: Routing power folding mirror harness

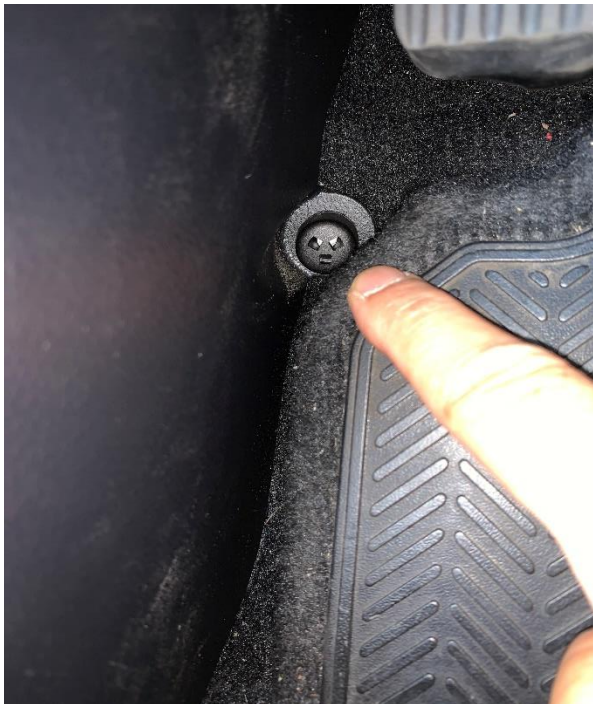
Pop off these pins holding down the door insulation so we can access the door wire grommets.

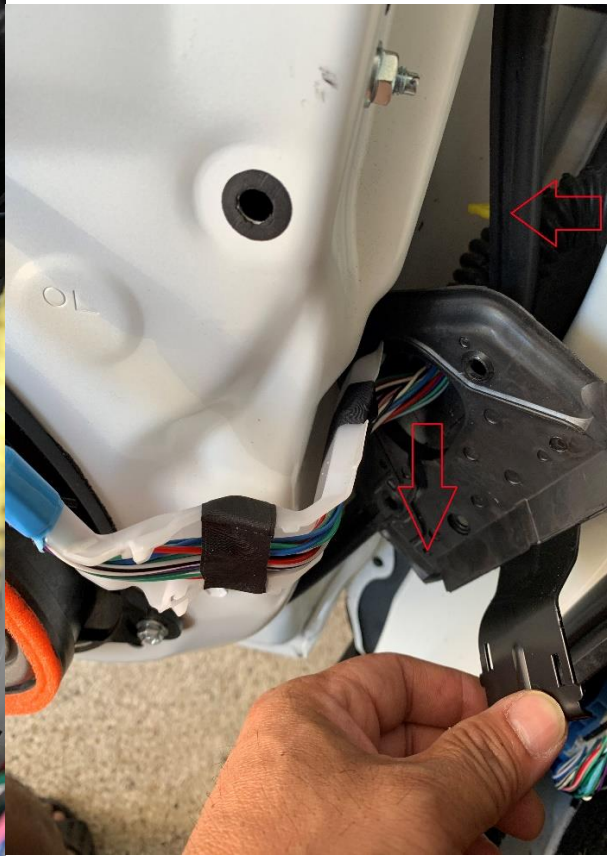
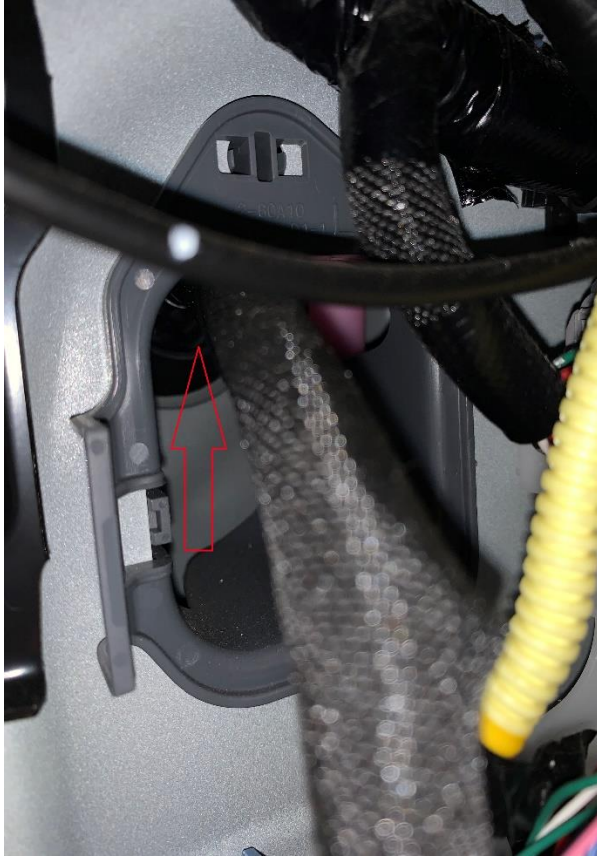
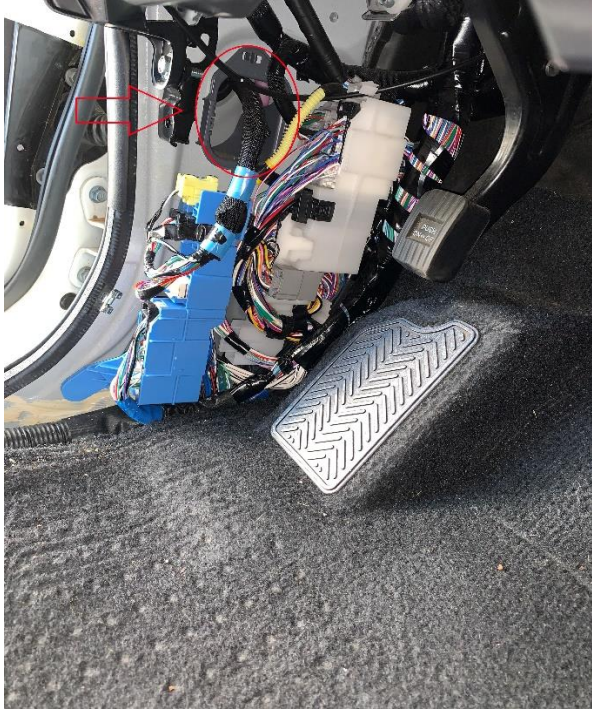


Remove these two 10mm bolts and remove the blue tape.



Remove the kick panel. Rotate the black knob counter clockwise and pull kick panel off. We need to route the part of folding mirror harness power wires (pick the shorter set of power wires) through the door grommet. Route only the pair of power wires

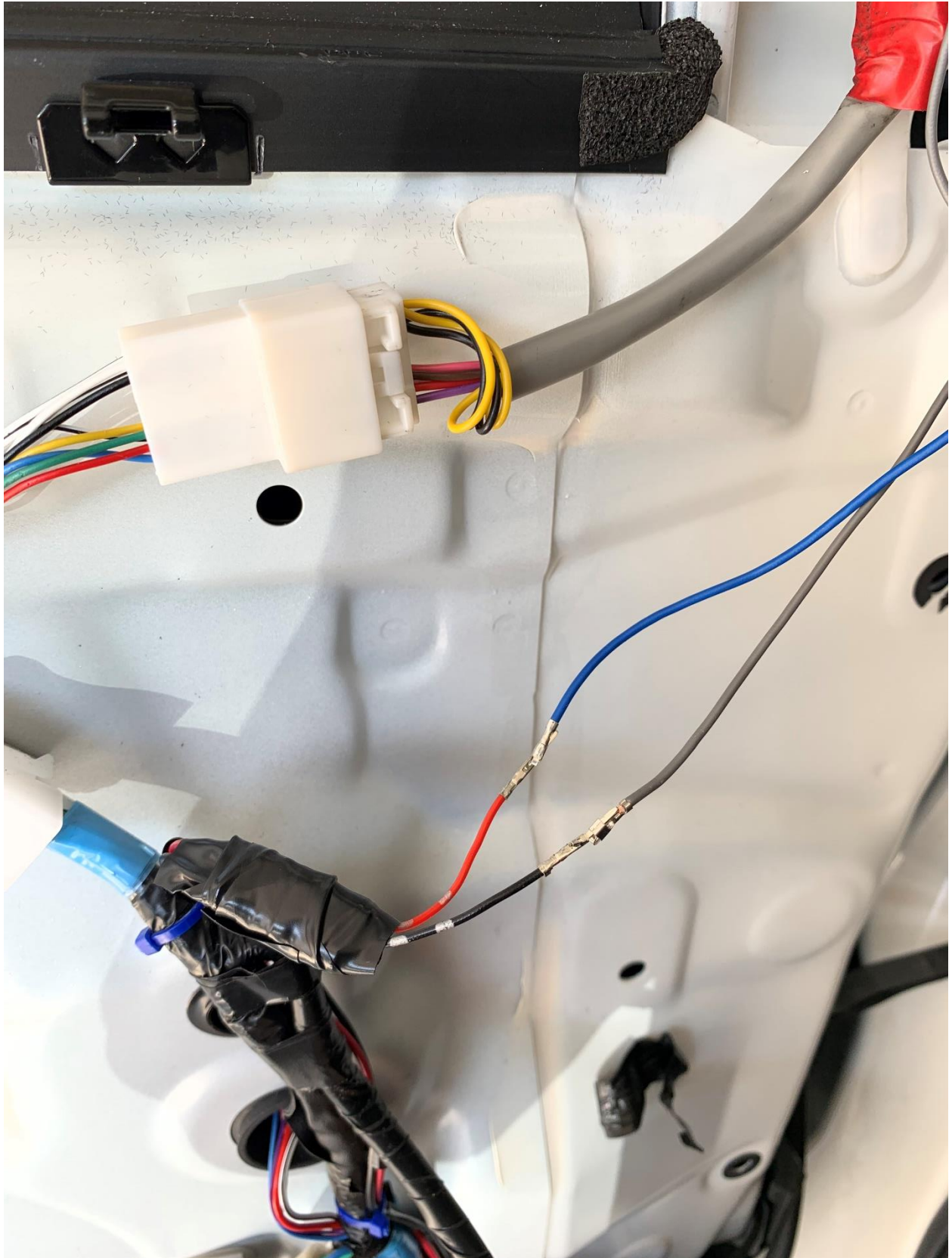




Route the power mirror part of the harness from the inside of the kick panel. Remove the rubber grommet, compress it and feed the wires. You may need to extend the power wires so it will reach the mirrors.



Now connect the pair of power wires to the mirror. Note the color of the wires. Harness side is red and black and mirror motor side is blue and grey.





Use the provided connector to join the wires. Check orientation of the plugs before inserting.



Repeat Part 3 to on the passenger side exactly the same way as the as driver's side.

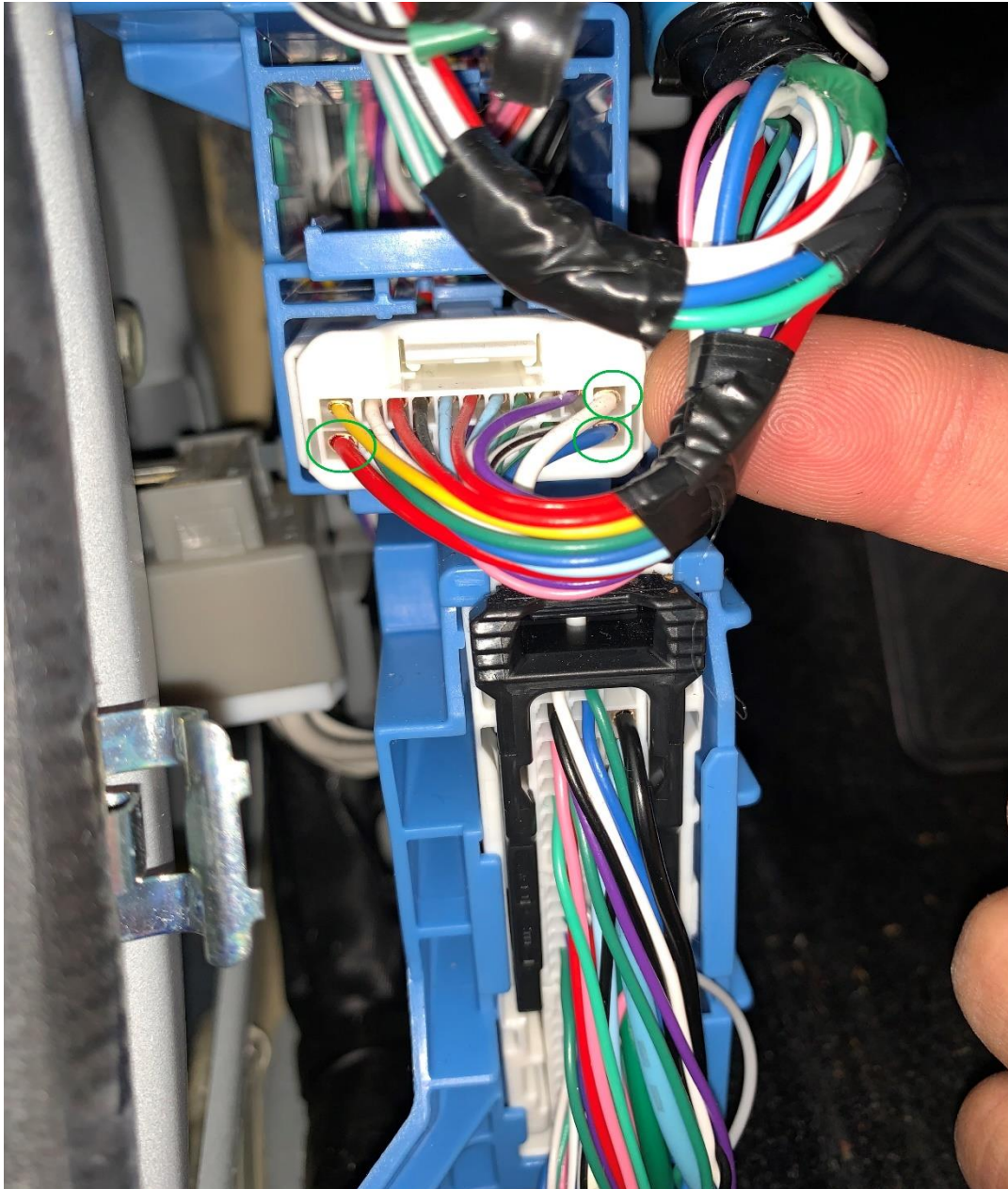
**Part 4: Tapping the power, connect module, connect mirror switch**

In the kick panel, look for this 22 pin harness. Locate the wires:

Blue (bottom right corner)

White (top right corner)

Red (bottom left corner)



Connect harness wires to this connector. See the circled wires.

Connect these wires:

Harness side → Connector side

Blue → blue (Lock detection)

Green → white (Unlock detection)

Red → red (12V constant power)

When tapping the 3 wires. Often times these taps don't bite correctly. Check for proper contact of each of the 3 wires with a meter if needed. If your mirrors don't fold, most likely it's an issue with the Red wire. If it does not fold when locked, it's an issue with the Blue wire. If it does not fold when unlocked, it's an issue with the Green wire.

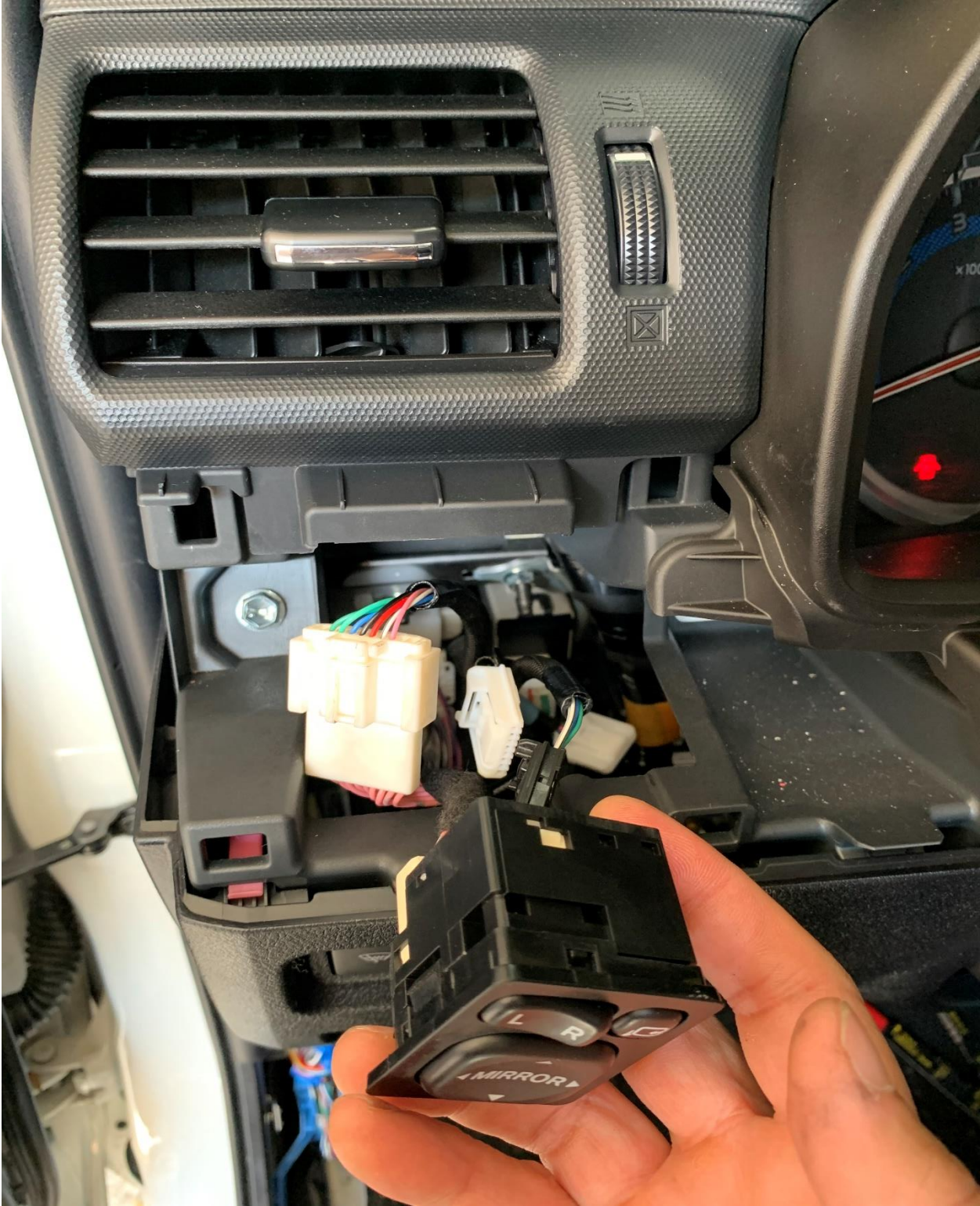
Connect the folding module as shown.



Remove the mirror switch cover. Pull this corner.



Connect the other end of the harness to the back of the mirror controller switch. One side goes to the switch, the other side connects to the mirror switch harness.



Installation is now complete. The mirrors should now fold when locked and unfold when unlocked. You can also manually fold/unfold the mirrors with the switch when the truck is on or in the accessory mode.